



# CLASS "A" SUBLEASE

## SANTA MONICA

PAR  
COMMERCIAL BROKERAGE



**ADDRESS:** 429 SANTA MONICA BLVD, SANTA MONICA, CA 90401

**SUITE 350:** 1,460 SQUARE FEET (APPROXIMATELY)

**RATE:** \$3.95 PER SQUARE FOOT, FSG

**TERM:** THROUGH JANUARY 31, 2011

**PARKING:** UNRESERVED PARKING AVAILABLE

**AVAILABLE:** NOVEMBER 2009

- EFFICIENT LAYOUT
- KITCHEN
- CITY AND OCEAN VIEWS
- PHONE/STORAGE ROOM
- HEART OF DOWNTOWN SANTA MONICA
- NUMEROUS AMENITIES AND RESTAURANTS WITHIN WALKING DISTANCE
- FIVE BLOCKS FROM THE BEACH
- TWO BLOCKS FROM THE THIRD STREET PROMENADE

1250 6TH STREET #303,  
SANTA MONICA, CA 90401  
T: 310.395.2663  
F: 310:395.2683  
WWW.PARCOMMERCIAL.COM

FOR MORE INFORMATION PLEASE CONTACT:

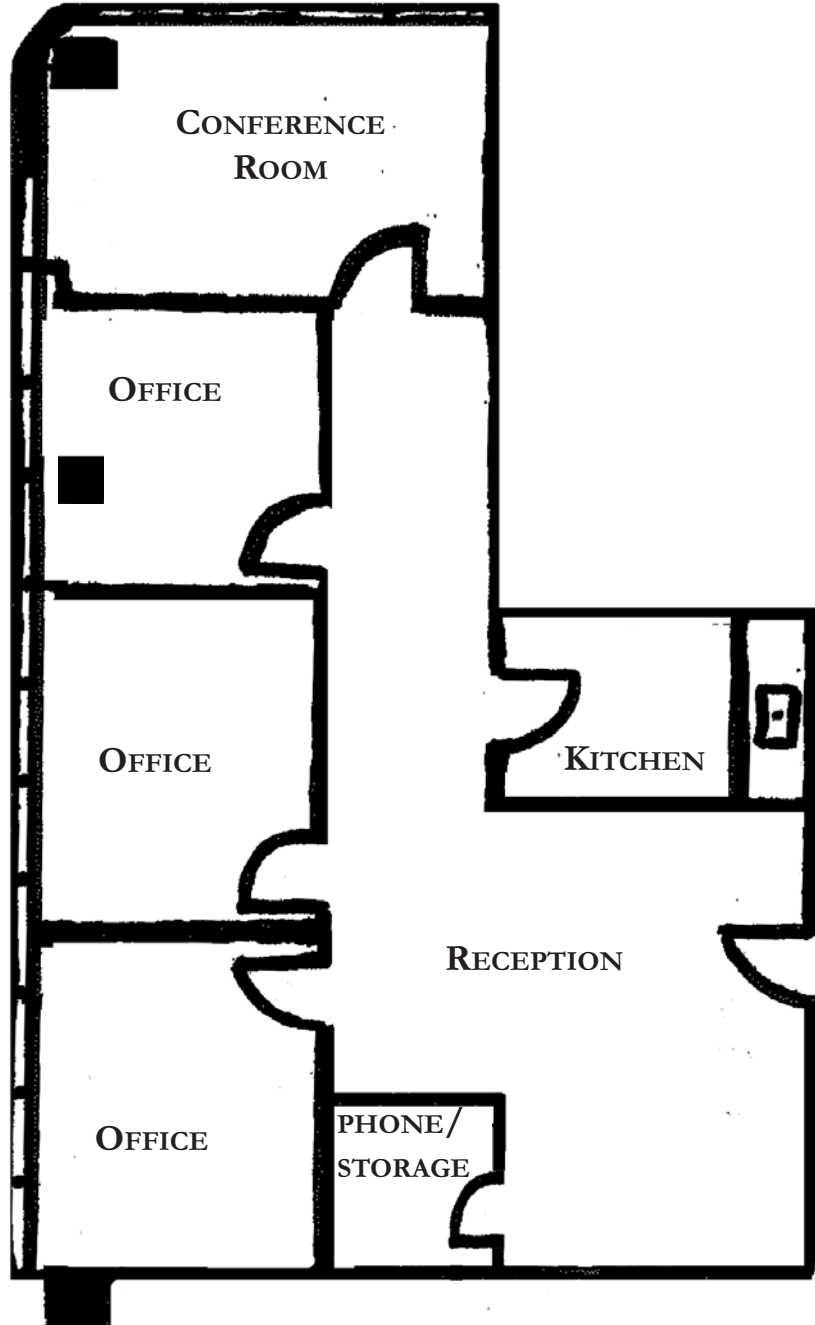
**JEFF JAROW**  
310.395.2663 x 105  
JEFF@PARCOMMERCIAL.COM



# CLASS "A" SUBLEASE

## SANTA MONICA

PAR COMMERCIAL BROKERAGE



1250 6TH STREET #303,  
SANTA MONICA, CA 90401  
T: 310.395.2663  
F: 310:395.2683  
WWW.PARCOMMERCIAL.COM

FOR MORE INFORMATION PLEASE CONTACT:

**JEFF JAROW**  
310.395.2663 x 105  
JEFF@PARCOMMERCIAL.COM